

**RT Quality Assurance
Philadelphia Headquarters
Report to RTOG Medical
Physics Committee
January 19-22, 2006**

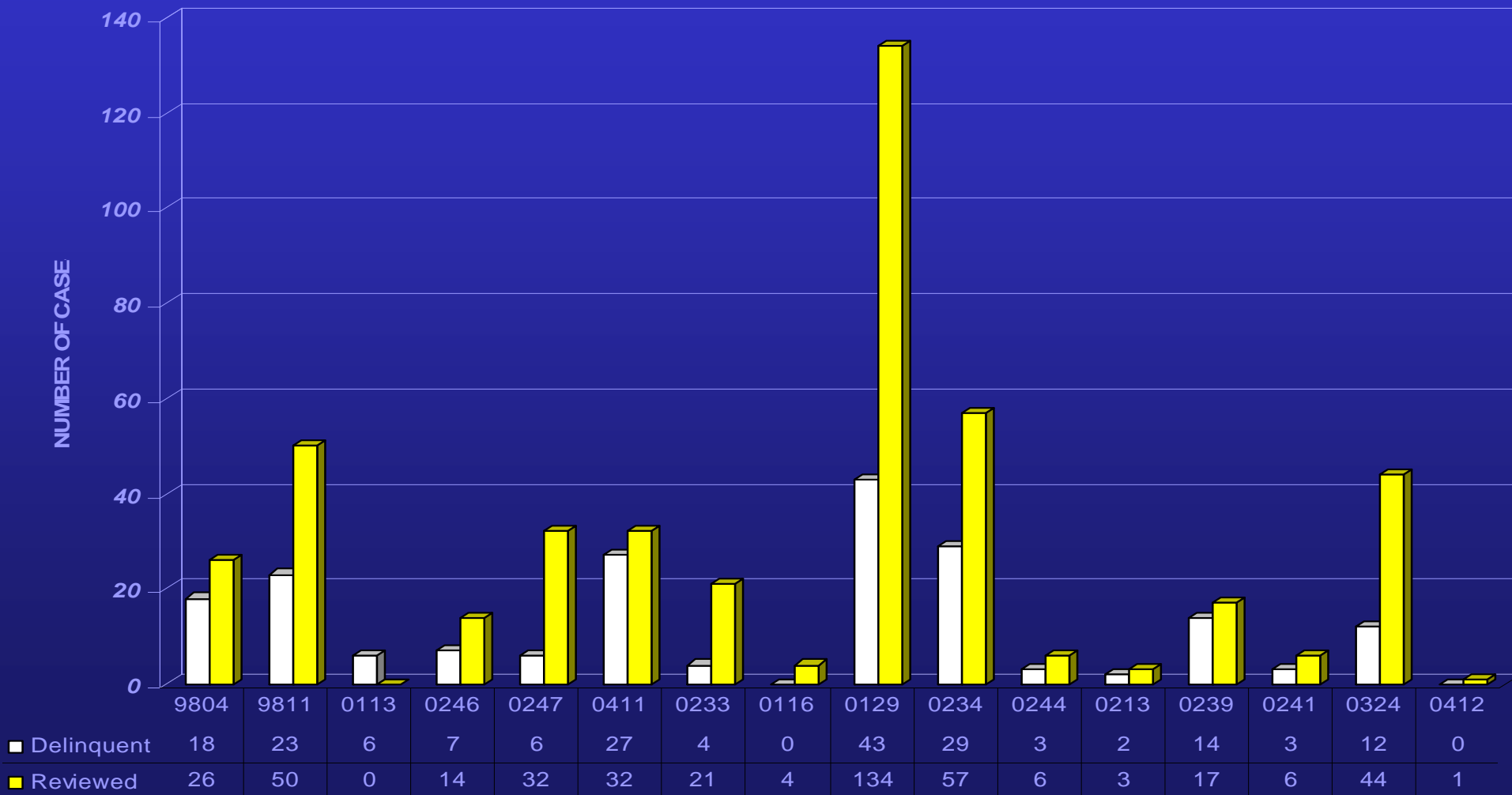
Initial Review

Cases Sampled for Review	56.5 %	(364/644)
Cases Not Sampled (Compliance Assumed)	9 %	(57/644)
Delinquent	31 %	(197/644)
Data received too late for Initial Review	4 %	(26/644)

In Compliance		(348/364)
Not in Compliance		(16/364)
Compliance Assumed		(57/57)
TOTAL OVERALL COMPLIANCE	96.2 %	405/421

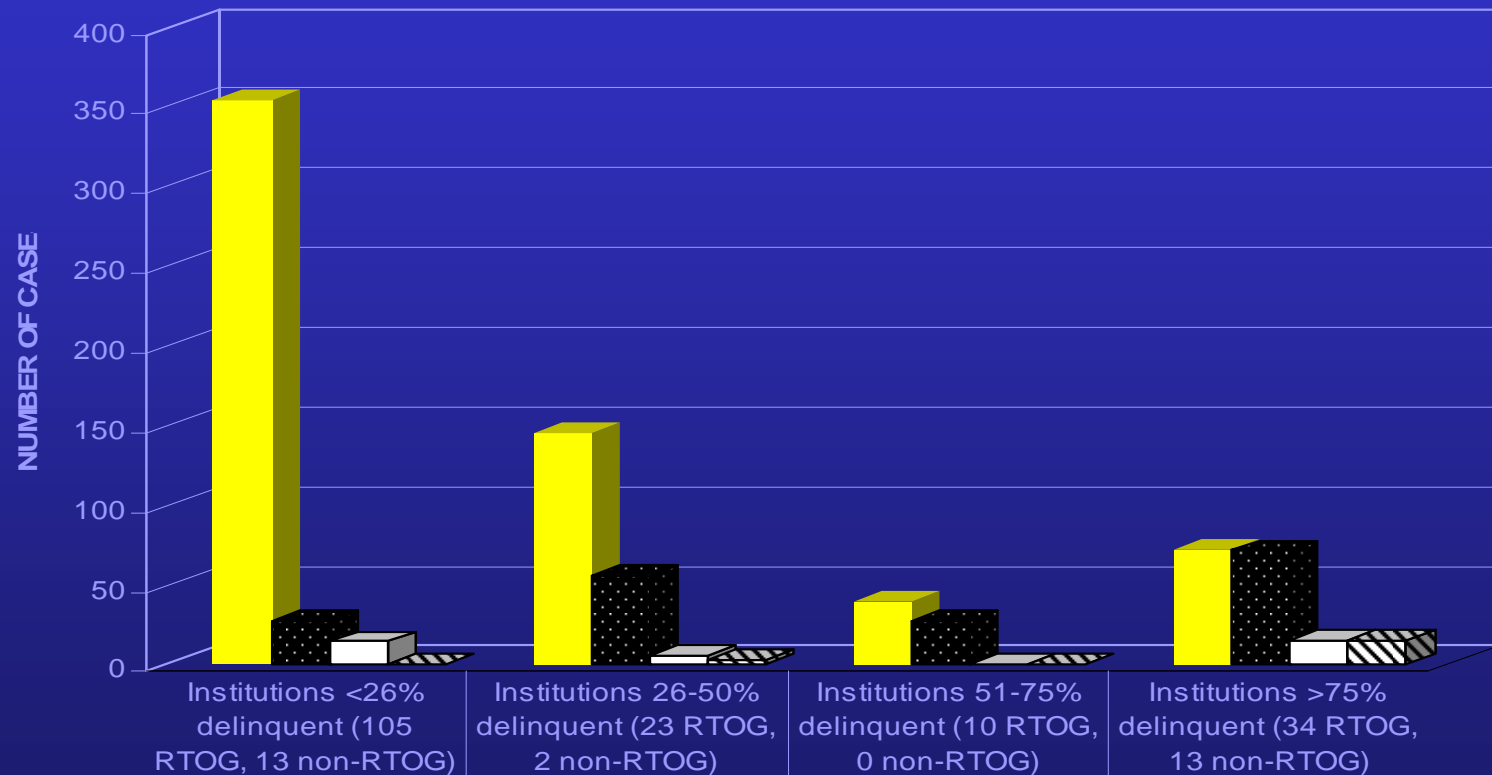
Initial Review By Study

INITIAL REVIEW BY STUDY



Initial Review By Institution

INITIAL REVIEW BY INSTITUTION



■ Total cases from RTOG institutions	354	145	39	72
■ Delinquent cases from RTOG institutions	27	55	27	71
■ Total cases from non-RTOG institutions	14	5	0	15
■ Delinquent cases from non-RTOG institutions	0	2	0	15

Study Chair Final Review

* Study Closed – Cases Still Under Review

V1 Cases Reviewed by Protocol Number

Study #	Name	01/01/2005 to 12/30/2005	Reviewed Deviation	Reviews to Date	Deviations to Date	Target Accrual
* 0013	BRAIN:BLEOMYCIN	18	3	18	3	72
* 0017	LUNG:GEMCITABINE/RT	16	1	35	2	78
* 0019	PROSTATE:BRCH	0	0	138	5	110
* 0113	ESOPHAGUS:RAND/II	20	0	84	1	84
0116	CERVIX:+NODE	1	0	27	3	66
* 0118	BRAIN METS:THALID	17	0	40	0	332
* 0128	CERVIX:RT&CELEB/PLA	0	0	84	11	83
* 0129	H&N: STAGE III/IV	216	5	550	10	720
* 0211	BRAIN:RT/IRESSA	120	3	178	5	158
* 0213	LUNG:CELEBREX, RT	15	1	15	1	122
0233	BLADDER PRESERVATION	33	0	33	0	96
0234	RT/CHEMORT AND C225	42	0	42	0	230
* 0241	LUNG: IRINOTECAN	29	1	29	1	36
* 0247	RESECTABLE RECTAL	32	0	32	0	141
* 0324	NSCLC:C225/CRT	66	3	66	3	84
* 0420	BRAIN: TEM/RT/CPT-11	70	0	70	0	157
* 9408	PROS: +/- HORM	72	8	1257	64	1980
* 9512	T2 VOCALCORD	2	1	250	5	240
* 9601	PROSTATECTMY	149	5	149	5	810
9804	BREAST:DCIS	20	0	242	4	1790
* 9811	ANAL CANAL	11	1	525	27	650
* 9813	BRAIN: TEMOZO	43	2	115	10	484
* 9902	PROS: HI RISK	51	6	51	6	1440
TOTAL		1043	40	4030	166	

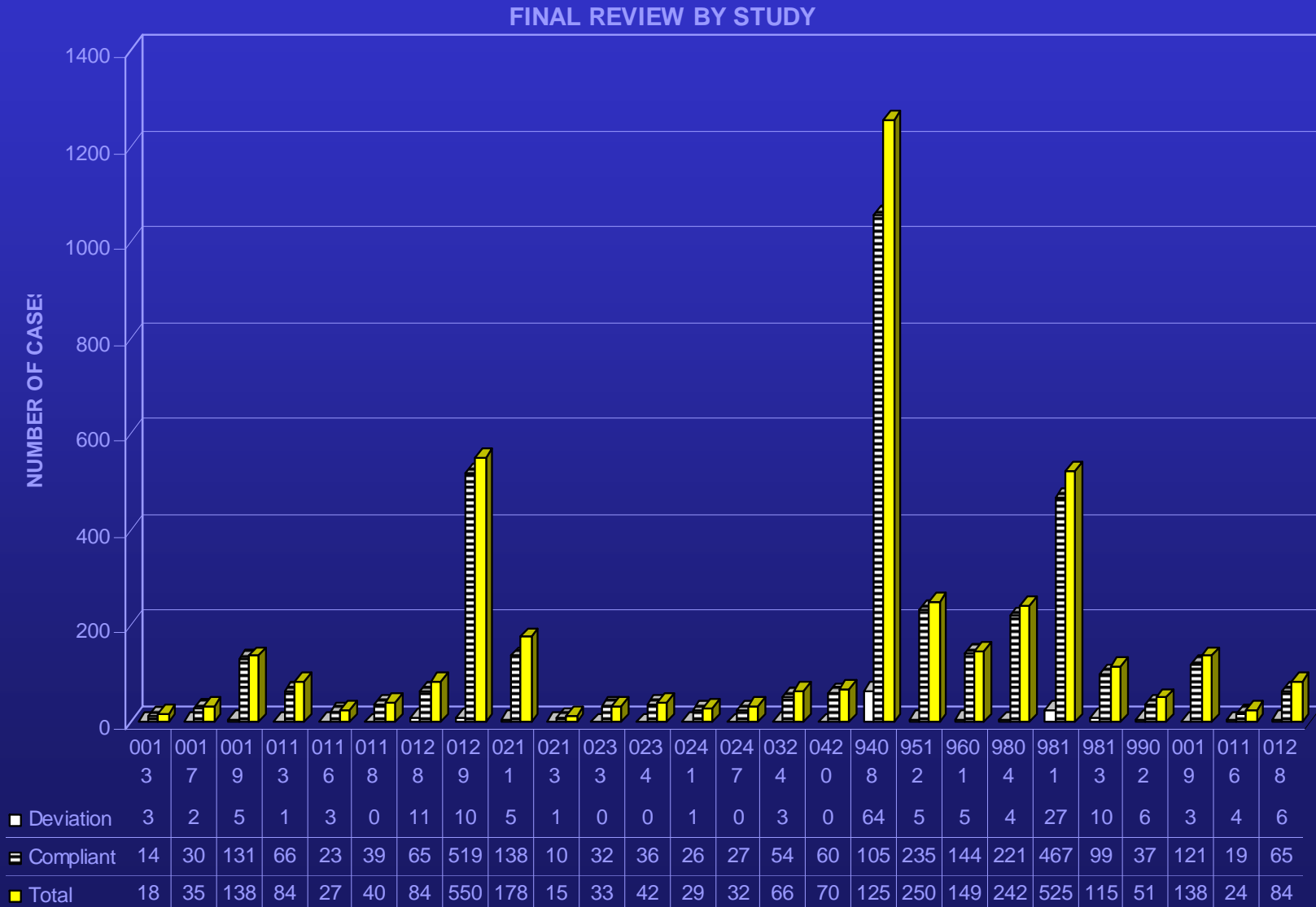
Study Chair Final Review

V1 Total Overall Scores for Cases Receiving Final Review

Per Protocol	75%	(787/1043)
Variation – Acceptable	12%	(129/1043)
Deviation – Unacceptable	4%	(40/1043)
Incomplete RT Due to Death	1%	(14/1043)
Incomplete RT Due to Progression	1%	(9/1043)
Incomplete RT Due to Refusal	2%	(21/1043)
Cancelled/Ineligible	2%	(23/1043)
No RT Given	1%	(14/1043)
Not Evaluable for Review	1%	(6/1043)

Overall Compliance 88%

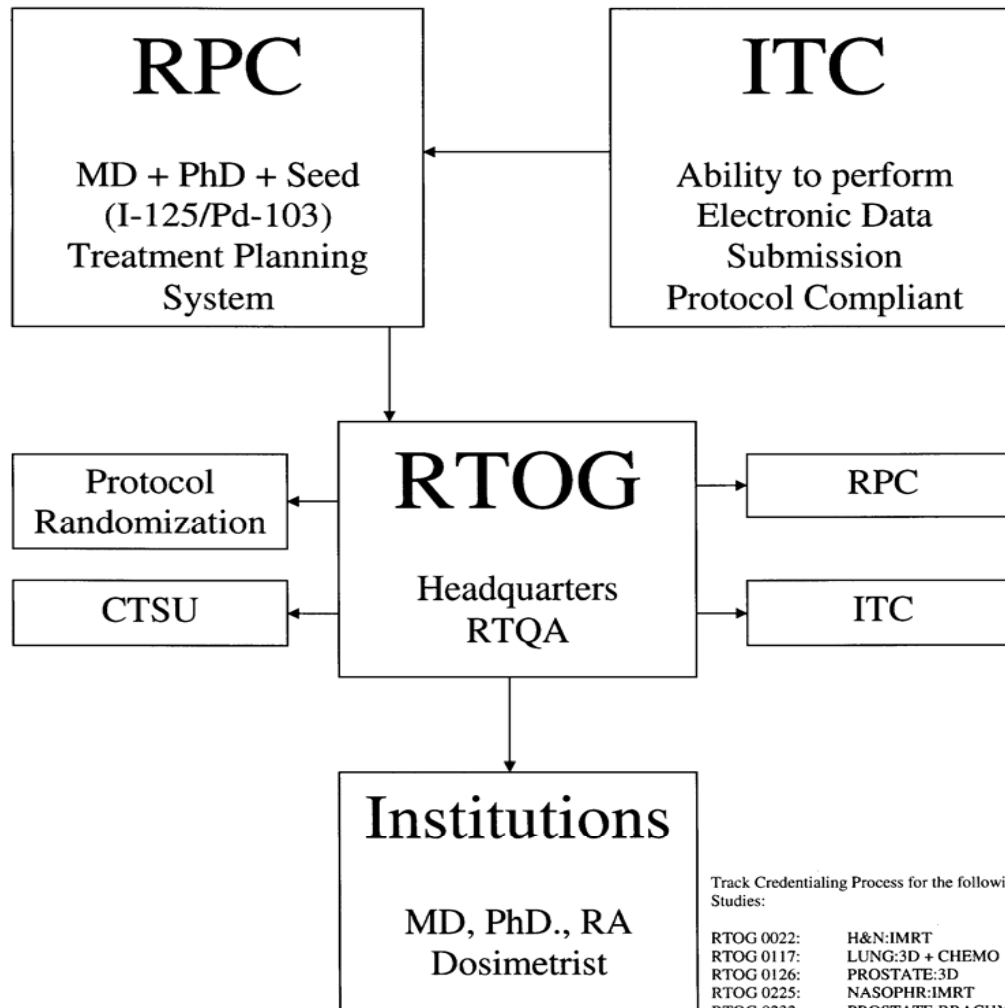
Final Review by Study



RTOG 0232

Prostate – Brachytherapy

Credentialing Process Notification



Track Credentialing Process for the following Studies:

RTOG 0022:	H&N:IMRT
RTOG 0117:	LUNG:3D + CHEMO
RTOG 0126:	PROSTATE:3D
RTOG 0225:	NASOPHR:IMRT
RTOG 0232:	PROSTATE:BRACHY +/- RT
RTOG 0236:	STEREOTACTIC RADIOAB
RTOG 0319:	BREAST:3DCRT
RTOG 0321:	PROSTATE:HDR/RT
RTOG 0413 /	
NASBP B:39	WBT vs PBI for women
RTOG 0421	H&N:RE-IRRADIATION

Institution Approval Letter for RTOG – 0232



Radiation Therapy Oncology Group

American College of Radiology
1101 Market Street, 14th Floor
Philadelphia, PA 19107
(215) 574-3189
(800) 227-5463 Ext. 4189
(215) 928-0153 Fax

Date

Radiation Oncologist, M.D.
Institution – CTSU
Address
City, State, Zip Code

Dear Dr.:

The Credentialing process by the Radiological Physics Center (RPC) for prostate brachytherapy and Electronic Data Submission to the Image-Guided Therapy Center (ITC) for RTOG-0232 – A Phase III Study Comparing Combined External Beam Radiation and Transperineal Interstitial Permanent Brachytherapy with Brachytherapy Alone for Selected Patients with Intermediate Risk Prostatic Carcinoma has been successfully met.

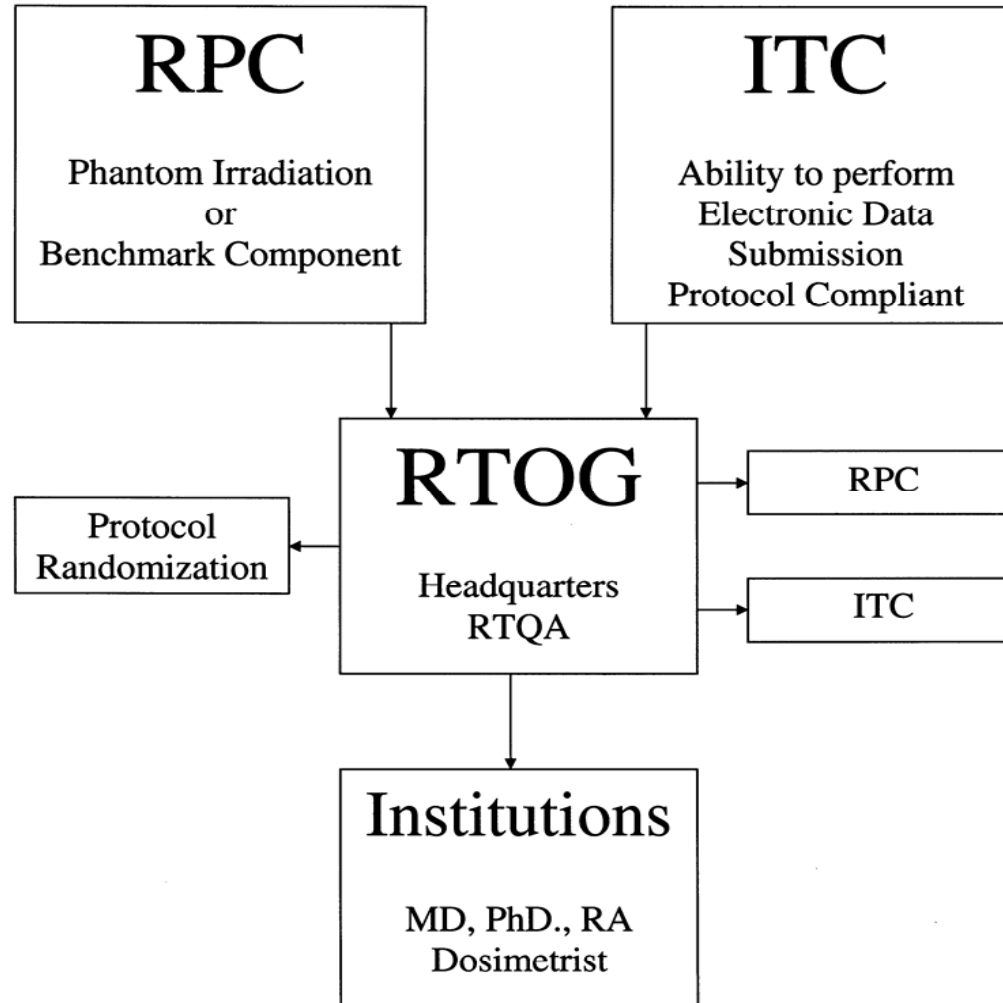
You are now approved to enter patients onto RTOG Prostate Implant Protocol 0232. A change in Radiation Oncologist, Physicist, treatment planning system, nuclide or seed model will require recredentialing by the RPC and/or ITC.

Sincerely,

Elizabeth A. Martin
Director, R.T. Quality Assurance

cc: Physicist
Research Associate
Dosimetrist
RTOG Randomization
ITC
RPC
CTSU

RTOG 0234
IMRT H&N – CHEMORT & C225
Credentialing Process Notification



Institution Approval Letter for RTOG – 0234



Radiation Therapy Oncology Group

American College of Radiology
1818 Market Street, Suite 1600
Philadelphia, PA 19103-3604
(215) 574-3189
(800) 227-5463 Ext. 4189
(215) 928-0153 Fax

Date

Principle Investigator

Institution – RTOG # , NCI # , RPC #

Address

City, State, Zip

Dear Dr.:

The IMRT Head and Neck Benchmark component of the credentialing process reviewed by the Radiological Physics Center (RPC) and the ability to perform electronic data submission for RTOG 0234 – Phase II Randomized Trial of Surgery followed by Chemoradiotherapy Plus C225 (Cetuximab) for Advanced Squamous Cell Carcinoma of the Head and Neck has been successfully met.

You are now approved to enter patients onto RTOG Protocol 0234.

If in the future you wish to enter patients onto other RTOG protocols using IMRT requiring the Benchmark Component of the credentialing process contact RTOG Headquarters for eligibility to participate.

Sincerely,

Elizabeth A. Martin
Director, R.T. Quality Assurance

cc: Physicist
Research Associate
RTOG Randomization
ITC
RPC

ATC Review Workstation at RTOG HQ's in Philadelphia, PA



NSABP B-39 / RTOG 0413 Radiation Treatment Review

Main Menu

This review was completed 6/1/2005 10:52:31 AM.
 Dose-Volume Analysis information cannot be updated.
 This review has been assigned to Julia White

Case Number: 29

Initials: SH
 Modality / PBI Technique: 3D Conformal External Beam
 Dose Level: 38.5 Rx Dose: 38.5 (Gy)

Date data submitted to ITC:
 Contact Email Contact Email Contact Email Contact Email

[Click here for Target Volume Review Form](#)

A. TARGET VOLUME ANALYSIS

Target	Volume (cc)	Percent Volume Receiving >= 0.90 Rx Dose(Gy)	ICRU Ref Dose (Gy)	Max Dose (Gy)	Min Dose (Gy)	Mean Dose (Gy)	Coverage Score
PTV_EVAL	246	100	34.6	38.50	40	30.2	39

B. DOSE HETEROGENEITY (DH) And CONFORMITY

	Dose Heterogeneity	Dose Heterogeneity Score
PTV_EVAL	1.04	1

Dose Heterogeneity (Max Dose/Rx dose): 1: DH <= 1.20, 3: DH > 1.20

C. NORMAL STRUCTURE ANALYSIS (See appendix II for standard structure names)

Normal Tissue	Volume (cc)	% Vol >= Ref Dose		Ref Dose (Gy)		Max Dose (Gy)	Mean Dose (Gy)	Score	Criteria	
		1	2	1	2				1	2
Ipsilateral Lung	1696	2.4	--	11.6	13.5	36	1.1	1	< 15%	< 20%
Contralateral Lung	2153.3	0	--	1.9	3.85	0.4	0	1	< 15%	< 20%
Ipsilateral Breast	2022.1	34 / 10.1	--	19.25/38.5	21.17/40.42	40	15	1	< 60/35%	< 65/40%
Contralateral Breast	1882	0	--	1.2	3.08	1	0	1	Point	< 5%
Thyroid	8	0	--	1.2	3.08	0.2	0.1	1	Point	< 5%
Heart (Right Sided)	--	--	--	1.9	3.85	--	--	--	< 5%	< 10%
Heart (Left Sided)	660.3	0.4	--	1.9	3.85	4	0.2	1	< 40%	< 45%
Unspecified Tissue	25170.1	--	--	--	--	33	--	--	--	--



R. T. Quality Assurance Staff



**Back Row L/R: Lorraine Quarles; Denise Manfredi; Tammy McGlade;
Betty Martin; Joanne Hunter
Front Row L/R: Darlene Herd; Julie McIlvaine**