

RPC Report to ATC



Miami, FL
January 19, 2006



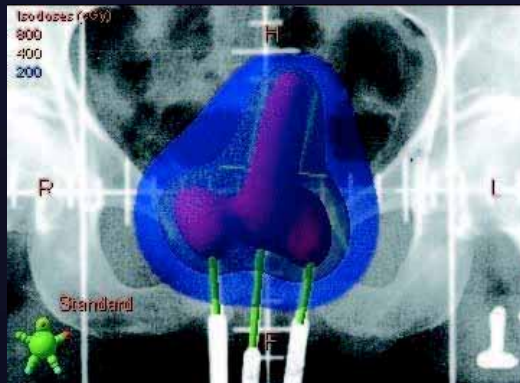
New TPS at RPC

Eclipse (with BrachyVision)

Training in Jan-April

Anticipate use in 6 months

Need ability to receive plans electronically



*One of several steps in
RPC's transition to
electronic chart review*



Status of ITC Server at RPC

- Receive digital data for RTOG protocols
- Participate in rapid reviews for 0413
- Receive digital data for GOG members
- Credentialing NCCTG members, expect to receive digital data



0413 PBI Credentialing

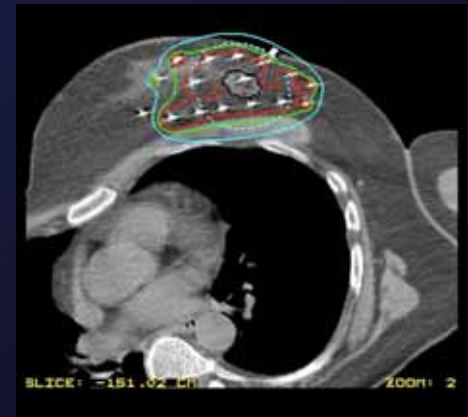
Modality	Institutions Applied	Institutions Credentialed	Physicians Credentialed
3D Conformal	313	228	510
Mammosite	227	137	283
Multi catheter	57	30	71
Total Institutions Credentialed		274	

As of mid-January



0413 PBI Issues

- NSABP tells newly-credentialed MD he has same credentials as previous
- CTSU only records institution, not MD
- Submitting physicist asked not to be listed as credentialed
- MD submitted knowledge assm't, didn't know who should do facility ques.
- Benchmark plan must be posted promptly



IMRT Benchmark Plans

- RPC has received 2 so far
- Evaluating in same fashion as QARC



Prostate 0232

8/30/05

1/13/06

Applications Submitted	77	87
Credentialed Institutions	58	64
Pending Dry Run	12	9



Lung 0412 Issues

- CTSU distributed spreadsheet listing 43 institutions as “pending credentialing by RPC”
- Only surgical credentialing required
- CTSU meant “not monitored by RPC”
- In fact, at least 20 are monitored, 2 are inactive
- Many others might be monitored, but are listed by NCI #, hospital name
- Considering adding NCI # to RPC database



Phantoms

- H&N: 8 functioning, building 10 more
 - 122 RTOG institutions are credentialed
- Lung: 3 phantoms
 - 6 RTOG institutions
- Liver: 2 phantoms
 - At 3rd institution



Phantom Status

Phantom	H&N	Liver	Prostate	Thorax
Irradiations	176	2+	22	11
Pass	128	2+	16	6
Fail	48	0	3	0
Under analysis or at institution	-	0	3	5
Year introduced	2001	2005	Spring 2004	Spring 2004
Total # Institutions	122			



Protons

- Completed evaluation:
 - MD-55 film
 - EBT film
- Conducting evaluation:
 - TLD
 - Presage 3D dosimeter
 - Normoxic gel dosimeter

