

ITC Status Report

June 22, 2006

Walter R. Bosch, D.Sc.

ITC Status Report

- ITC / WUCON Network Re-configuration
- Credentialing Events Database
- ITC Data Security Policy / 21CFR11 Compliance
- ATC Compliant Treatment Planning Systems
- IHE-RO Effort

ITC / WUCON Network Re-configuration

- Necessitated by changes in Internet connectivity at ITC.
- ITC is now part of WU Radiation Oncology secure network, part of WU Clinical Operations Network (WUCON).
- Opportunity to implement secure upload (SFTP) of patient data.

ITC WUCON Transition Timeline

DATE	MILESTONE
Jan	Network transition plan developed
Feb	SFTP server testing with institutional volunteers <ul style="list-style-type: none">• “Reality check” on submission procedures, firewall policies, technical support issues.• Ten clinical physicists (representing a variety of institutions and TPS) were invited to submit data using prototype SFTP server.• Seven submitted data and reported on their experience.• No significant problems reported.
Mar	Submission procedures updated
Apr	Broadcasts to RTOG, NSABP institutions and on ATC web site
May 23	New ITC mail server / ATC web server installed
May 27-29	New SFTP server / RRT server installed; ITC desktops and internal servers migrated to WUCON
July	Existing internet connectivity to be disconnected

Anticipated Issues

- Replacement for FTP clients on TPS platforms
 - Integrated FTP submission mechanism in TPS (XiO)
 - Command-line client on TPS platform (Pinnacle)
- Users
 - Acquire and configure SFTP clients
 - Make workflow changes in data submission
- Manufacturers
 - Provide alternative SFTP client software
 - Help with alternative workflow and submission procedures

Information Provided on ATC Web Site

- SFTP server name (ITCsubmit.wustl.edu) and IP address.
- Links to open-source SFTP client software
- Configuration guide for SFTP clients
- Instructions for users of specific treatment planning systems.

Changes in Uploading Digital Data to ITC - Microsoft Internet Explorer

Address: <http://atc.wustl.edu/home/news/SFTP.html>

Washington University School of Medicine • ADVANCED TECHNOLOGY CONSORTIUM

ATC • Advanced Technology Consortium
Providing support in quality assurance and data management for radiation therapy clinical trials

MEMBERS CREDENTIALING PROTOCOLS PUBLICATIONS RESOURCES HOME

Changes in Uploading Digital Data to ITC **UPDATED (6/12/06)**

Changes in ITC's network configuration have necessitated a transition from FTP to Secure FTP for all protocol participants uploading digital data to the ITC. Secure FTP (SFTP) uses the SSH network protocol and offers several advantages over FTP, including secure (encrypted) transport of usernames, passwords, and data, and compatibility with most firewall configurations.

Please note:

- **The old ITC FTP server (castor.wustl.edu) is no longer in service.** All network digital data submissions to ITC must use the new, Secure FTP server, **ITCsubmit.wustl.edu** (IP address 128.252.17.87).
- User names and passwords for SFTP are the same as those used for FTP.
- **Instructions for configuring SFTP clients** (WS FTP Pro, FileZilla, WinSCP3, and Linux sftp) **UPDATED (6/14/06).**
- For many users, the SFTP upload procedure is essentially the same as for FTP, except that a new SFTP client may be needed. SFTP client software, both commercial and open-source, is broadly available. Windows clients include **WS FTP Professional** (commercial), **FileZilla** (free/open-source) and **WinSCP** (free/open-source). For Linux systems, both graphical (gftp) and command-line (sftp) programs are included with most distributions.
- Instructions for Specific Treatment Planning Systems are linked below:
 - **CMS/XiO SFTP Submission of RTDG Files in CMS XiO** **NEW (5/25/06)**
 - **Philips/Pinnacle** - Contact Philips support for help in installing command-line SFTP client

Please direct questions regarding this transition to Walter Bosch (itc@castor.wustl.edu).

<http://medicine.wustl.edu/> Internet

Secure Web Server

- Currently shares hardware with SFTP server
- Distinct hostnames will allow future move to separate hardware, if necessary:
 - ITCsubmit.wustl.edu – SFTP
 - ITCreview.wustl.edu – HTTPS (RRT, etc.)
- New secure certificate for **ITCreview.wustl.edu**
- Supports
 - Remote Review Tool
 - Online Forms (DDSI, Facility Questionnaires, JCOG Data Submission Form)
 - Secure Download of Digital Data

Remote Review Tool

- New URL: <https://itcreview.wustl.edu/Review/RRT/rrt.html>
(Use link on Resources page of ATC web site.)
- The ITC Remote Review Tool has been implemented with a new architecture:
 - Secure web server in network DMZ (public IP address, limited network ports)
 - Data server (NFS) in private network
- Minor issues in current configuration
 - Data cache on web server (~30s delay for copying data on first access only)
 - Importing user-edited contours for general use requires manual intervention.

**Please wait while data files are
copied to the RRT server.**

Copying will take approximately 28 seconds.

Access to CMS/FOCAL Via VPN

- CMS/FOCAL is being developed for
 - Multi-modality image fusion (PET/CT, MR/CT, etc.)
 - 3D Plan review
- Data Import
 - DICOM RT / RTOG Data Exchange treatment planning data imported via ITC software
 - DICOM images files (CT, MR, PET) imported directly into FOCAL
- Reviewer Access
 - ITC Citrix Server gives ITC users access to FOCAL tools.
 - Work is in progress to provide access for selected users via WUCON VPN.

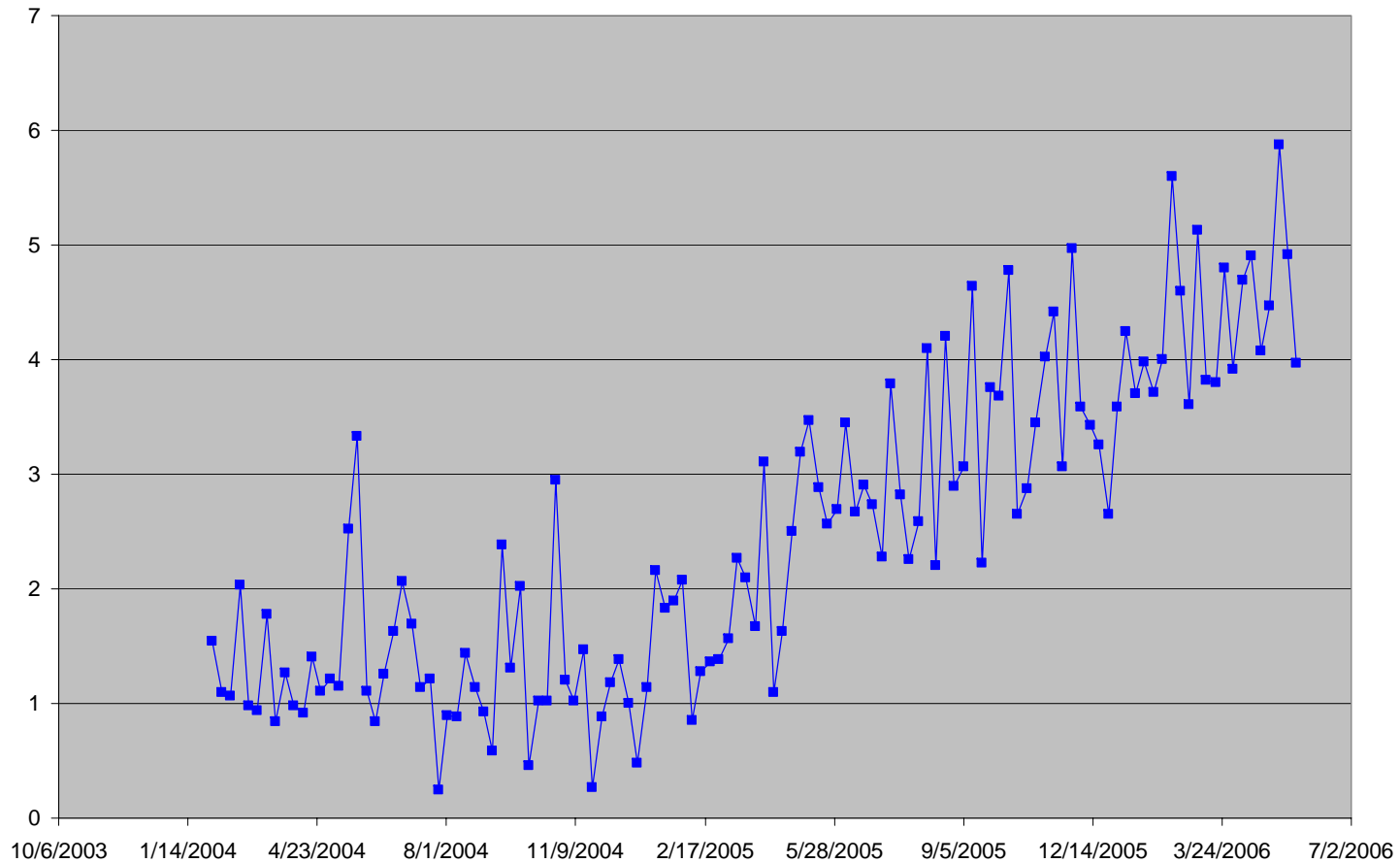
Remaining Network Issues

- ITC Access to ATC Review Workstations
 - Outgoing network connections from ITC now originate from different IP addresses.
 - Access to workstations at RTOG, QARC has been restored.
 - Problems remain in connecting to workstation at RPC.

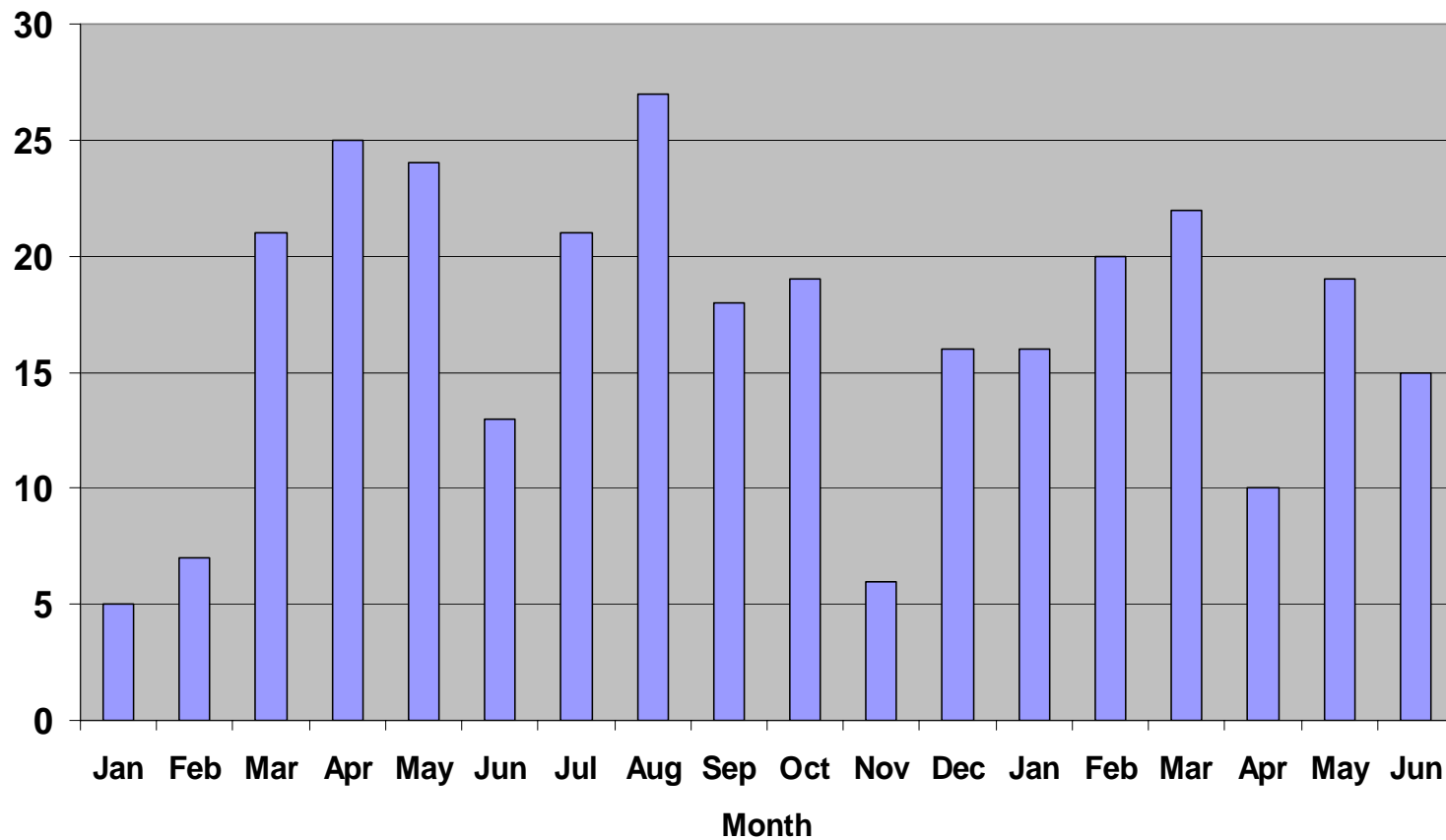
Lessons Learned

- Broadcasts sent by RTOG and NSABP reached institutions, but not necessarily the people responsible for maintaining data submission (physicists, IT personnel).
- Untested assumptions regarding the consistency of features in software led to difficulty in re-engineering network connections.
- Network performance and reliability have improved substantially since May 27. Minor issues remain and are being addressed.
- ITC is receiving good support from WU and RO department networking personnel, but is substantially more dependent on them to diagnose problems.
- This network transition has been costly in ITC effort in the short term.

ITC Data Submission Rate (Gbyte/week)



New (S)FTP Accounts Created in 2005-2006 (304 Total)



ITC QA Events Database

- Track dates and status of QA process steps performed at ITC
- In use since Jan 2005.

ITC QA Events Version 04122701

QA Events

Image-Guided Therapy Center An Advanced Technology Clinical Trials QA and Support Center

Sponsor: RTOG
 Protocol: 0126
 Case: 220
 Institution: TORSB

Event	Date	Status
Data_Inventory_Complete	5/20/2004	Done
Sent_for_OARTV_Review	6/9/2005	Sent
OARTV_Review_Complete		
Sent_for_DVA_Review		
DVA_Review_Complete		

Event: Data_Inventory_Complete
 Reviewer: rjh
 Requested by: rjh
 Comment:

Modified by: haynes
 Modified date: 1/7/2005 1:25:16 PM

Credentialing Events Report

Example:
 QA Events
 Report for
 RTOG 0413

Event Tracking by Case for 0413 Cases & Dry Runs

Case	Institution	Registration	Data Rcv'd	DVA Sent	DVA Done	PI Sent	PI Done	DVA Pending	PI Pending	DVA days	PI days
2	WMBH	3/23/2005	3/29/2005	3/29/2005	3/29/2005	3/29/2005	3/29/2005	-	-	0	0
3	UCOLHS	4/7/2005	4/11/2005	4/11/2005	4/11/2005	4/11/2005	4/11/2005	-	-	0	0
5	WMBH-Tr	4/18/2005	4/19/2005	4/19/2005	4/20/2005	4/20/2005	4/20/2005	-	-	1	0
7	WMBH	4/25/2005	4/29/2005	4/29/2005	4/29/2005	4/29/2005	4/29/2005	-	-	0	0
9	AOS	4/27/2005	5/5/2005	5/5/2005	5/6/2005	5/6/2005	5/6/2005	-	-	1	0
13	WMBH	5/3/2005	5/12/2005	5/16/2005	5/16/2005	5/16/2005	5/16/2005	-	-	0	0
16	WMBH	5/6/2005	5/12/2005	5/16/2005	5/25/2005		5/25/2005	-	-	9	-
18	AOS	5/10/2005	5/17/2005	5/17/2005	5/18/2005	5/17/2005	5/18/2005	-	-	1	1
20	CONHNH	5/12/2005	5/17/2005	5/17/2005	5/19/2005	5/19/2005	5/19/2005	-	-	2	0
21	WMBH	5/13/2005	5/20/2005	5/23/2005	5/23/2005	5/23/2005	5/23/2005	-	-	0	0
22	WMBH	5/16/2005	6/2/2005	5/25/2005	5/25/2005	6/2/2005	6/2/2005	-	-	0	0
25	WMBH	5/17/2005	5/20/2005	5/23/2005	5/23/2005	5/23/2005	5/23/2005	-	-	0	0
29	DMCSPC	5/17/2005	5/27/2005	6/1/2005	6/1/2005	5/31/2005	6/1/2005	-	-	0	1
30	WMBH	5/18/2005	5/20/2005	6/16/2005	8/24/2005	6/16/2005	8/24/2005	-	-	69	69
33	MKDOGD	5/25/2005	5/25/2005	5/25/2005	5/27/2005	5/26/2005	5/27/2005	-	-	2	1
34	WMBH	5/26/2005	6/10/2005	6/10/2005	6/13/2005	6/10/2005	6/13/2005	-	-	3	3
35	STNFRD	5/31/2005	6/3/2005	6/6/2005	6/6/2005	6/6/2005	6/6/2005	-	-	0	0
38	WMBH	6/3/2005	6/10/2005	6/10/2005	8/24/2005	8/24/2005	8/24/2005	-	-	75	0
39	ERLANG	6/3/2005									
40	HOACNY	6/3/2005	6/7/2005	6/7/2005	6/8/2005	6/8/2005	6/8/2005	-	-	1	0
42	CCSTAG	6/6/2005	6/10/2005	6/10/2005	6/10/2005	6/10/2005	6/10/2005	-	-	0	0
43	UAB	6/7/2005	6/8/2005	6/8/2005	6/8/2005	6/8/2005	6/8/2005	-	-	0	0
44	BRYNPA	6/8/2005	6/14/2005	6/15/2005	6/15/2005	6/15/2005	6/15/2005	-	-	0	0
45	WBI	6/8/2005									
46	ROSPRK	6/9/2005									

Wednesday, January 11, 2006

Page 1 of 28

ITC Credentialing Events Database

- Sequence of credentialing steps per protocol (e.g., for NSABP B-39/ RTOG 0413)
 1. Start
 2. Digital data submitted
 3. DDSI submitted
 4. Color isodoses submitted
 5. All data received
 6. Digital data review ITC
 7. Sent to RPC for review
 8. ITC process complete
 9. Finished
- Status (success/failure)
- Date
- Comment

Credentialing Events Version 05.12.23.03

Sponsor: RTOG
 Protocol: 0413
 Institution: WUSTL Washington University
 Attempt: New 1

Start	1/5/2005	began
Digital Data Submitted	12/5/2005	pass
DDSI submitted	12/8/2005	pass
Color isodoses submitted	12/8/2005	pass
All Data Received	12/8/2005	done
Digital Data review ITC	12/9/2005	pass
Sent for Review RPC		
ITC process complete		
Finished		

Quit

ITC Standard Operating Procedures

- Anna Eccher joined ITC staff in April 2006 as Dosimetry Data Coordinator.
- She working with Roxana Haynes to learn data processing procedures and is reviewing and revising SOP documents as she learns the procedures.

ITC Standard Operating Procedures

- ITC internal Wiki used to maintain SOP documents.
- Data Processing Procedures
 - General procedures for all protocols (complete)
 - Protocol-specific procedures (work in progress)

The screenshot shows a Microsoft Internet Explorer browser window displaying a TWiki page. The browser's address bar shows the path: WebHome < ITC SOPs < TWiki. The page header includes the TWiki logo and navigation links: Edit, WYSIWYG, Attach, and Printable. The main content area is titled 'ITC Standard Operating Procedures' and features a sub-section 'General Data Processing Procedures' with a list of links: Quick Start, New Patient Registration, Transferring Incoming Data, Copying CD Data to Work Directory, Processing Incoming Data, Processing Contours, Processing Plan Information *, Calculating DVHs, Importing Contour Changes, Reading Tapes, SAMO Backup - Archiving Submitted Data, Scanning Films, Sending Email, and Logging Problems. A note at the bottom indicates '* Work in progress (WRB, 6/13/06)'. The left sidebar contains navigation options for ITC SOPs Web, including Users?, Groups?, Index, Search, Changes, Notifications, Statistics, and Preferences, as well as a 'Webs' section with links to ITC SOPs, Main, Sandbox, and TWiki.

ITC Standard Operating Procedures

- Example:
Registration of New Case in ITC Database and Chart

4.0 Procedures

4.1 Case registration is sent via email from the cooperative group.

- Print a copy of this email for the case chart.

4.2 Locate ITC Code for Institution entering case.

4.3 Log case registration into ITC QA Database.

1. Use study number, e.g. 0413 and Click on box *SELECT NEW CASE*
2. Enter the following case attributes:
 - Protocol case number
 - Patient initials
 - Physician name
 - ITC code for Institution entering case
 - Registration Arm of Treatment

4.4 Prepare a study folder to contain the case chart.

- Use appropriate folder, e.g. Hot Pink used for 0413.
- Print an adhesive label and attach it to the folder. Use the format **0413c0024**, where
 - **0413** is the protocol number,
 - **c** signifies case (separates protocol and case numbers), and
 - **0024** is the case number.

4.5 Log case registration into the ITC Event tracking database.

Make sure to designate the case as *Rapid Review* or *Timely Review*, as appropriate.

4.6 If this case is a *Rapid Review* (an Institution's first case on a given treatment modality), send the following or similar note to the Institution via email:

"You have registered a case on B39/0413 which is the first case registered by your institution for the modality you are planning on using for this patient. Please note that this

Timeline for Documenting ITC Data Security

- 5/30/2006 – SOP draft documents
 - Standard Operating Procedures
 - Software Validation
- 7/30/2006 – Risk Assessment draft document complete
- 10/31/2006 – Audit draft document complete
- 12/31/2006 – Data Security Plan in place

ATC Compliant Treatment Planning Systems (as of June 22, 2006)

D = DICOM RT Objects

R = RTOG Data Exchange Format

Vendor	Treatment Planning Systems			Treatment Modality				
	System	Version*	Exchange Format	3DCRT	IMRT	Seed Brachy	HDR Brachy	Protons
CMS	Focus/XiO	3.1	R	✓	✓	✓		
Elekta	RenderPlan 3D		R	✓				
	PrecisePlan	2.01	D	✓	✓			
Nomos	Corvus		R		++			
Nucletron	Helax TMS		R	✓	✓			
	TheraPlan Plus		R	✓				
	PLATO RTS	2.62	D	✓				
	PLATO BPS	14.2.6	D				✓	
Philips	Pinnacle ³		R	✓	✓			
	AcqPlan	4.9	R	✓				
Rosses Medical	Strata Suite CTPlan	4.0	R			✓		
RTek	PIPER	2.1.2	R			✓		
Varian	BrachyVision	6.5 (Build 7.1.67)	D				✓	
	Eclipse	7.1	D	✓	✓			
	VariSeed	7.1	D			✓		

ITC Work With Vendors/Users Toward ATC Compliance

- CMS XIO 4.3.1 was released in early June; this version has DICOM export which was Vendor Complete as last tested. No data from a clinical site has yet been received by ITC using XIO 4.3.1 DICOM export.
- Simuplan TPS (Simuplan, S.L.), a MAC based TPS for MammoSite®, submitted DICOM test data 11 May 2006 (CT, RS, RP, and RD). Only the CT was readable by the Merge library. Simuplan asked for more specifics, but Dr. Matthews has not yet been able to follow-up because of his focus on WUCON reconfiguration efforts.
- ITC has received TomoTherapy Hi-Art digital data from UC Davis using Tomo Research Workstation and is reviewing for ATC compliance.

IHE-RO Technical Committee Meeting April 24-28, 2006 at ITC, St. Louis, MO

- Topics addressed
 - Review of Draft Transactions Document for 2006 demonstration
 - Plans for 2006 Connectathon and Test Tools
 - Scope of Work for 2007
 - Extension of RT Plan object (IMRT, electrons)
 - Image registration
 - Treatment delivery scheduling
 - Data Retrieval (DICOM Query/Retrieve) for RT objects