



NATIONAL  
CANCER  
INSTITUTE

**RTOG**  
RADIATION THERAPY  
ONCOLOGY GROUP



**ACRIN**<sup>TM</sup>  
AMERICAN COLLEGE OF  
RADIOLOGY  
IMAGING NETWORK

# RTOG-0522 TRIAL

Robert Jeraj, Matt Vanderhoek, Chihwa Song,  
**University of Wisconsin**

John Freymann, Justin Kirby, Brian Hughes, Carl Jaffe,  
Vikram Bhadrasin, Jim Deye, **NIH/NCI**

Walter Bosch, Joe Deasy, Yu Wu, Divya Khullar,  
Jim Purdy, **ATC/ITC, Washington University**

Anthony Levering, **ACRIN**

Betty O'Meara, Mike Gillin, **RTOG**

Kian Ang, **MD Anderson**

# RTOG 0522/ACRIN 4500

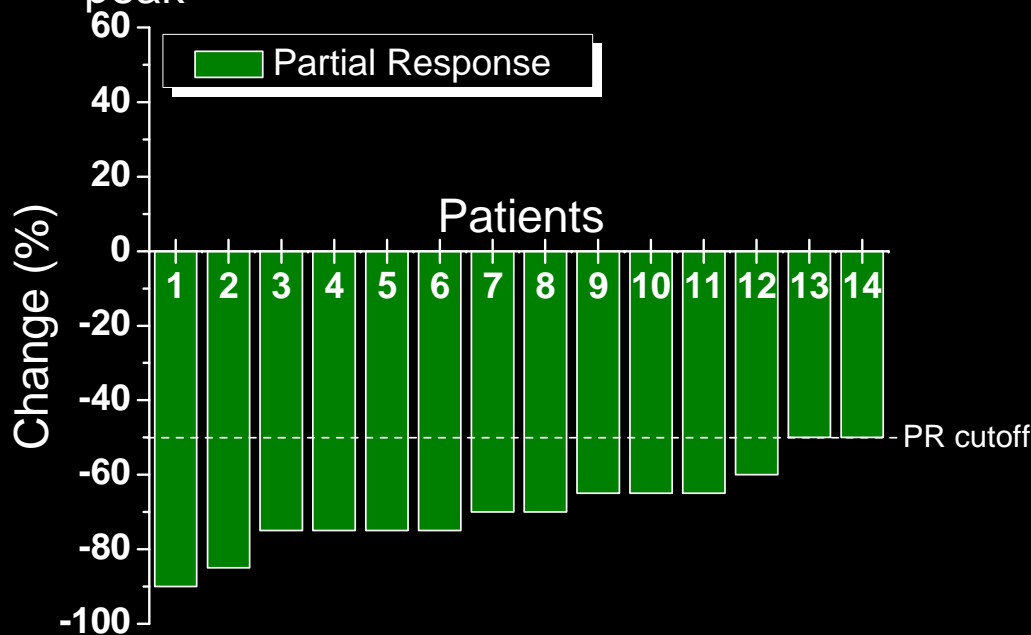
- Unique opportunity to investigate concurrent advanced **treatment dose plans and imaging**
- Unique opportunity to test and develop methods for **quantitative PET imaging assessment in a multi-center trial setting**
- Developing preliminary data for an **RTOG-lead U01 grant application - Robust quantitative imaging endpoints for cooperative radiation oncology clinical trials**

# PET quantification measures

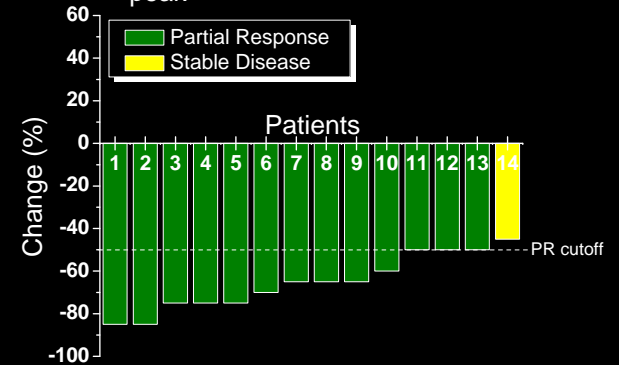
- **Single value measures:**
  - **SUV:**  $SUV_{max}$ ,  $SUV_{mean}$ ,  $SUV_{peak}$ ,  $SUV_{total}$ ,  $SUV_{xx\%}$
  - **Size:** 1D, 2D, 3D
- **Distribution measures:**
  - **SUV:** SUV distribution, heterogeneity, fit,  $SUV_{xx\%}$  distribution
  - **Histograms:** AVH, RDH
  - **Variability:** inter-patient, intra-patient
- **Spatial measures:**
  - **Spatial statistics:** Moran's I

# Summary statistics ( $SUV_{peak}$ )

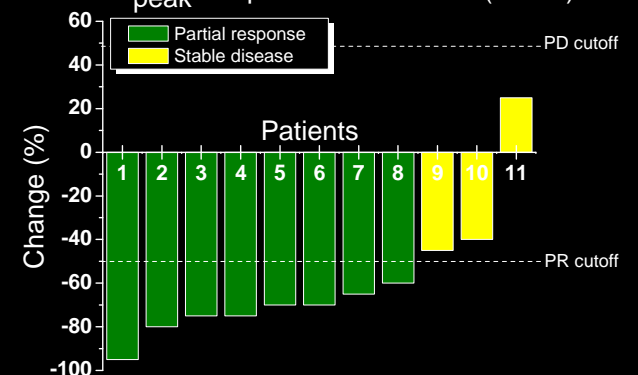
## $SUV_{peak}$ Response Assessment (primary+nodes)



## $SUV_{peak}$ Response Assessment (primary)

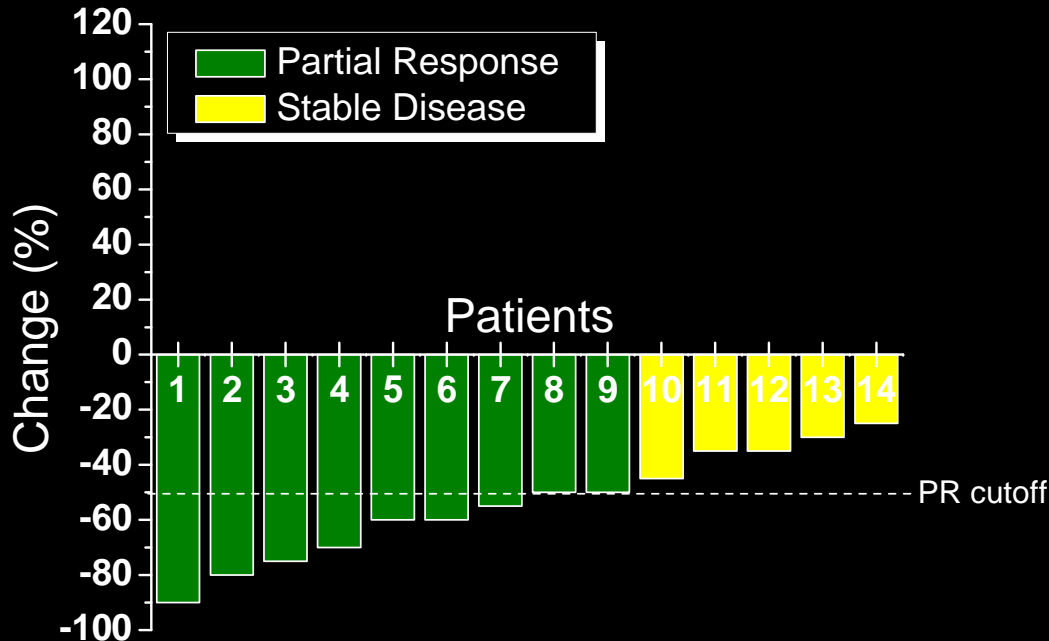


## $SUV_{peak}$ Response Assessment (nodes)

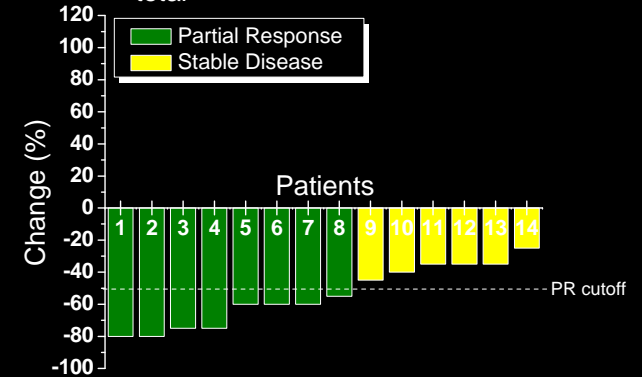


# Summary statistics ( $SUV_{total}$ )

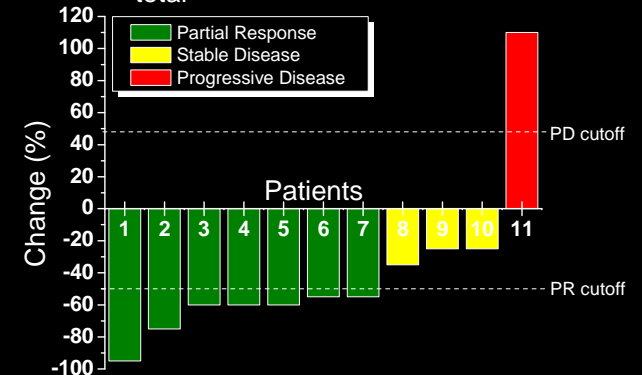
## $SUV_{total}$ Response Assessment (primary+nodes)



## $SUV_{total}$ Response Assessment (primary)

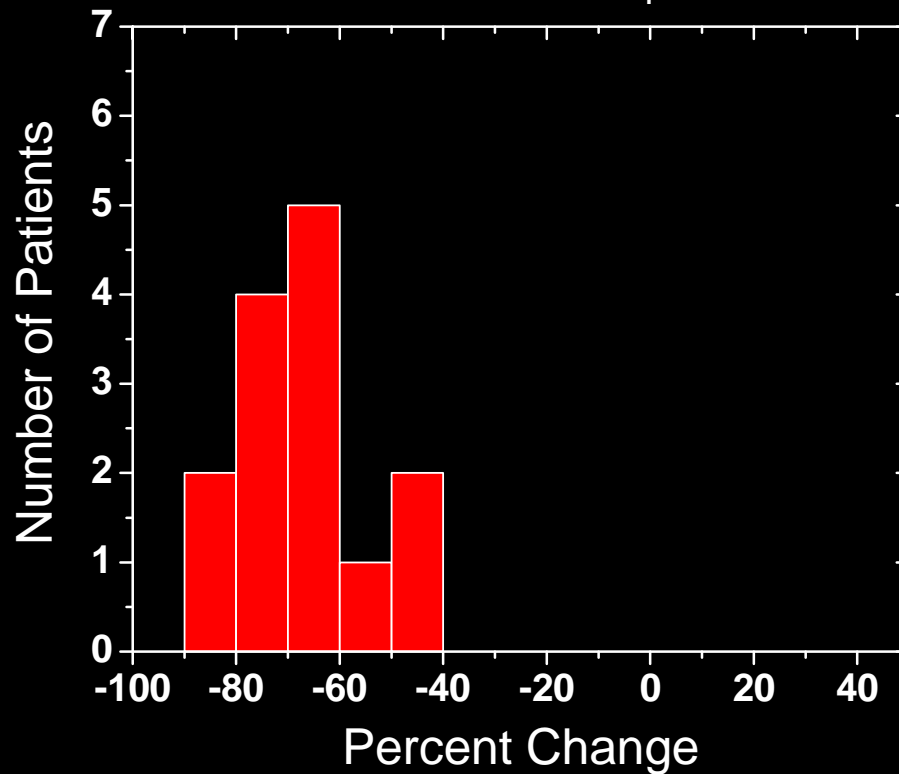


## $SUV_{total}$ Response Assessment (nodes)

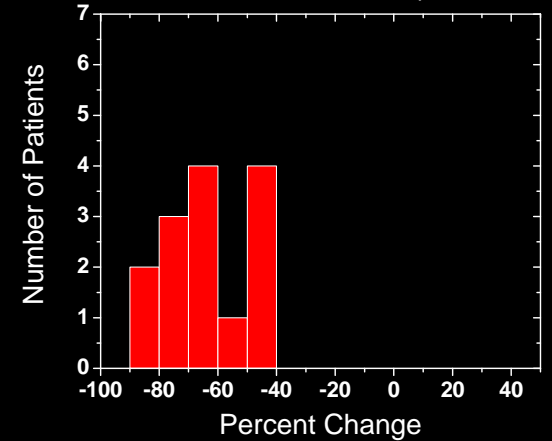


# Inter-patient response variation

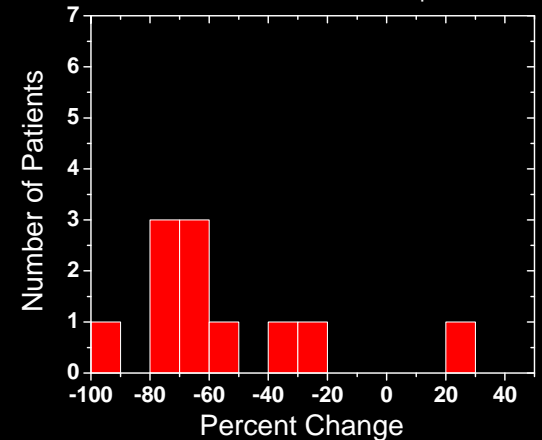
Inter-patient response variation: SUV<sub>peak</sub> (primary+nodes)



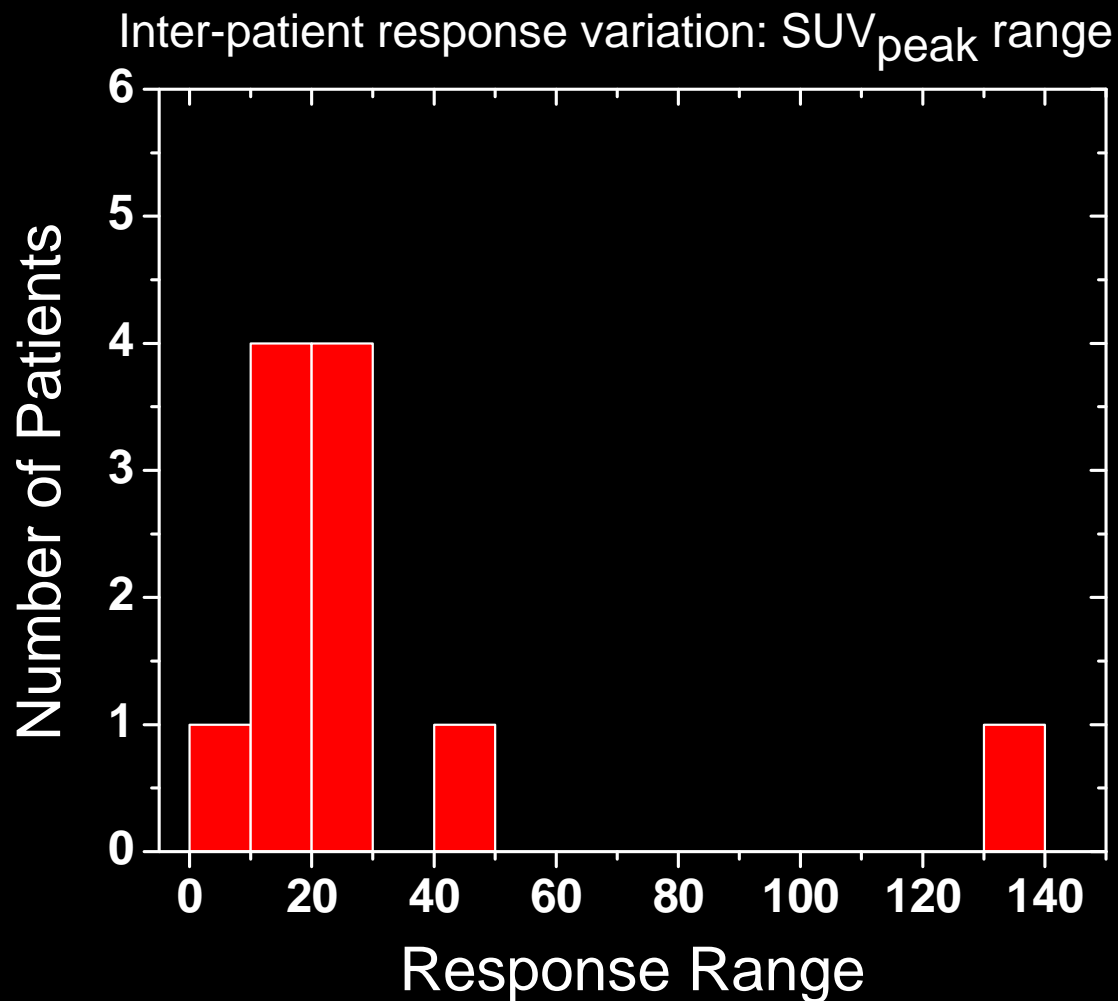
Inter-patient response variation: SUV<sub>peak</sub> (primary)



Inter-patient response variation: SUV<sub>peak</sub> (nodes)



# Intra-patient response variation



# Conclusions

- **Successful combination** of both, the imaging and dosimetry data!
- Most of the technical glitches resolved – **need updated NBIA database**
- **U01 proposal:**
  - Gather preliminary data
  - Obtain data sharing permits
  - Grant submission



**Thanks everyone  
for making this possible !**