

IGRT Phantom for Clinical Trails

James M Galvin, DSc
Ying Xiao, PhD

RTOG Headquarters Physicists
Thomas Jefferson University Hospital

David Followill, PhD
Geoffrey Ibbott, PhD

RPC MDAnderson

Imaging & Treatment Coordinate Coincidence

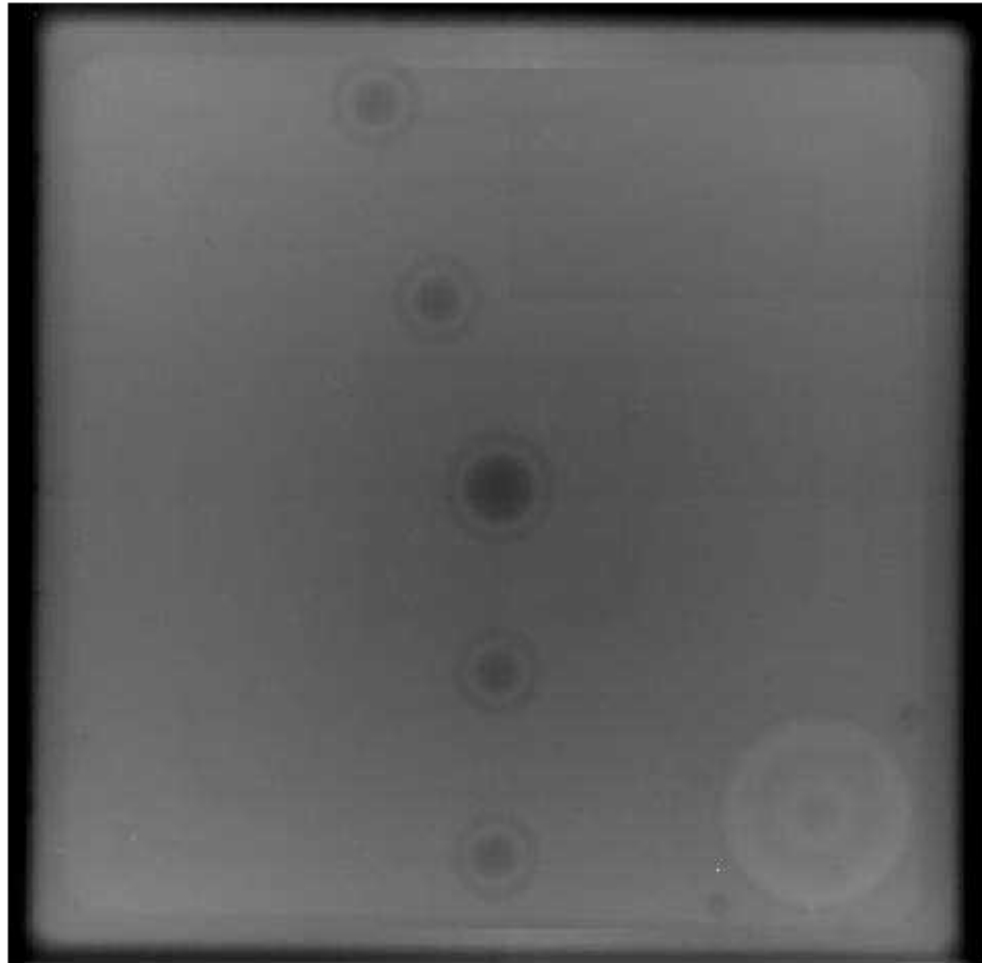
- This test is called for in AAPM Task Group Report 142 Table VI - Imaging
 - Daily for both SRS/SBRT and non-SRS/SBRT treatments
 - Daily test is for all systems (Planar kV & MV and for cone beam)
 - Tolerance ≤ 1 mm SRS/SBRT
 - Tolerance ≤ 2 mm non-SRS/SBRT
 - Monthly testing is required for Planar kV & MV systems using same Tolerances

The Modus Phantom



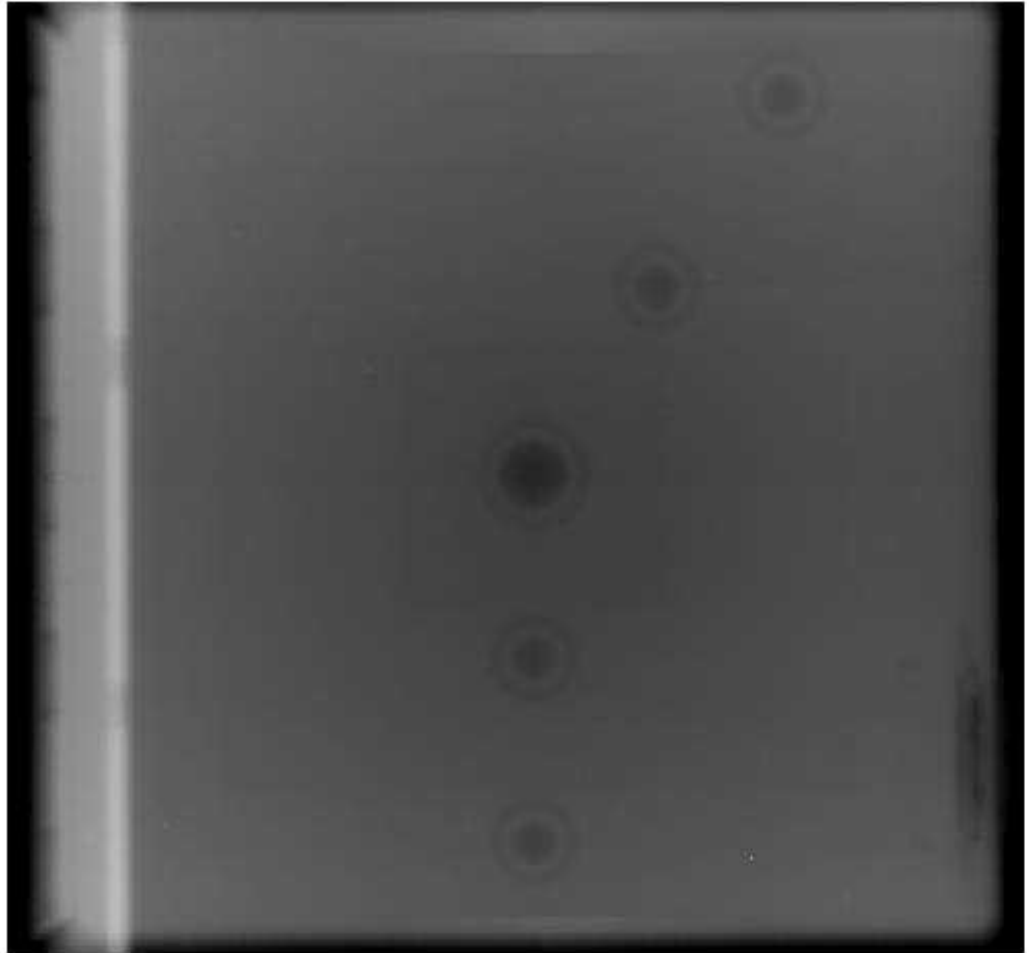
The Modus Phantom

- Penta-Guide
- Ant Port Film



The Modus Phantom

- Penta-Guide
- Lat Port Film



Imaging & Treatment Coordinate Coincidence

- What should clinical trials groups do about this test?
 - Should it be part of credentialing?
 - Are there other solutions?